

Mild

Moderate

Severe

Very severe, horrible

1 2 3 4 5 6 7 8 9 10

No  
Pain

Worst  
pain  
you can  
imagine

**Never or 1 day**

**2-6 days (several days)**

**7-11 days (half or more of the days)**

**12-14 days (nearly every day)**

**Very important**

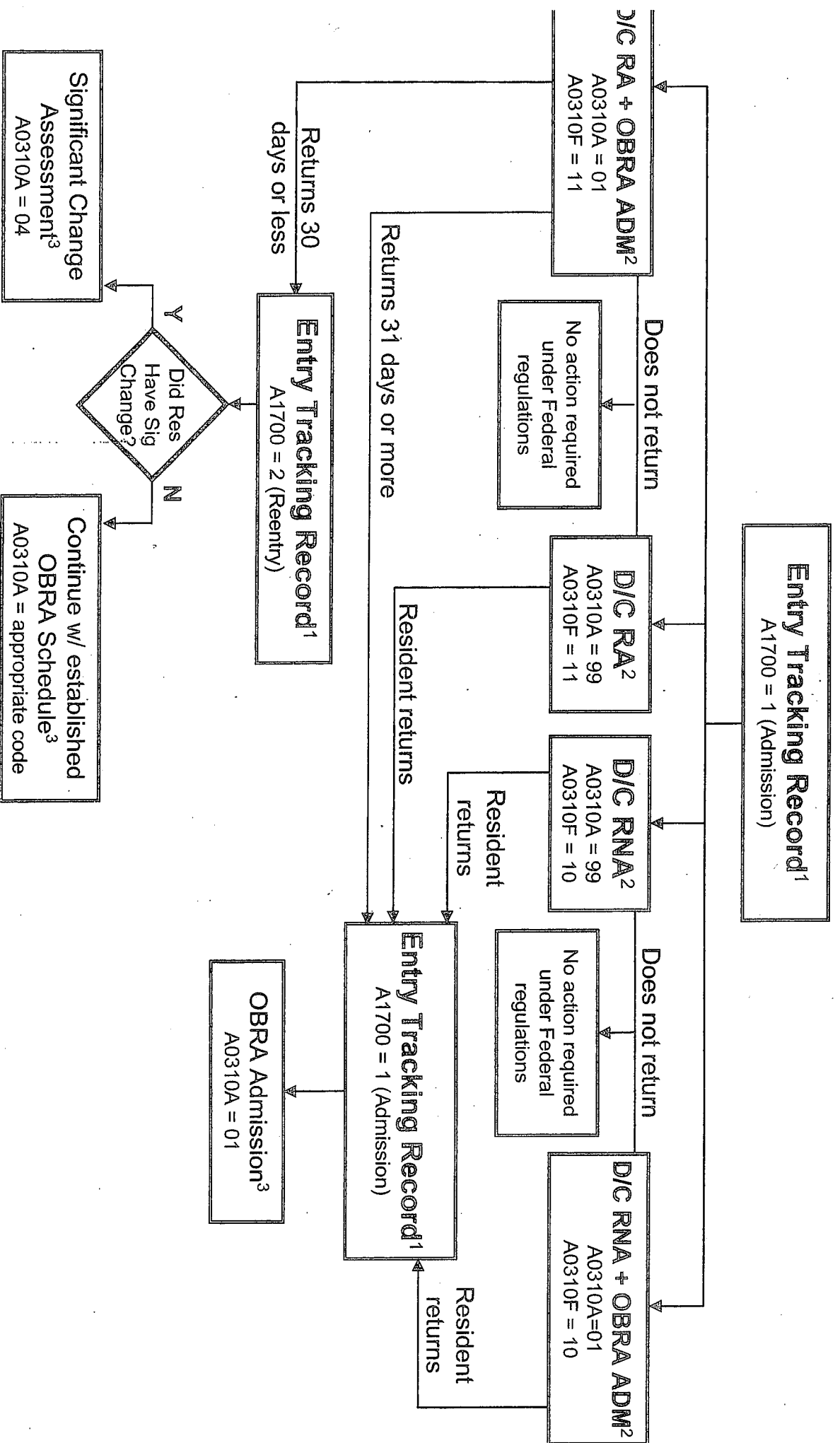
**Somewhat important**

**Not very important**

**Not important at all**

**Important, but can't do or no choice**

# Entry, Discharge, and Reentry Algorithms



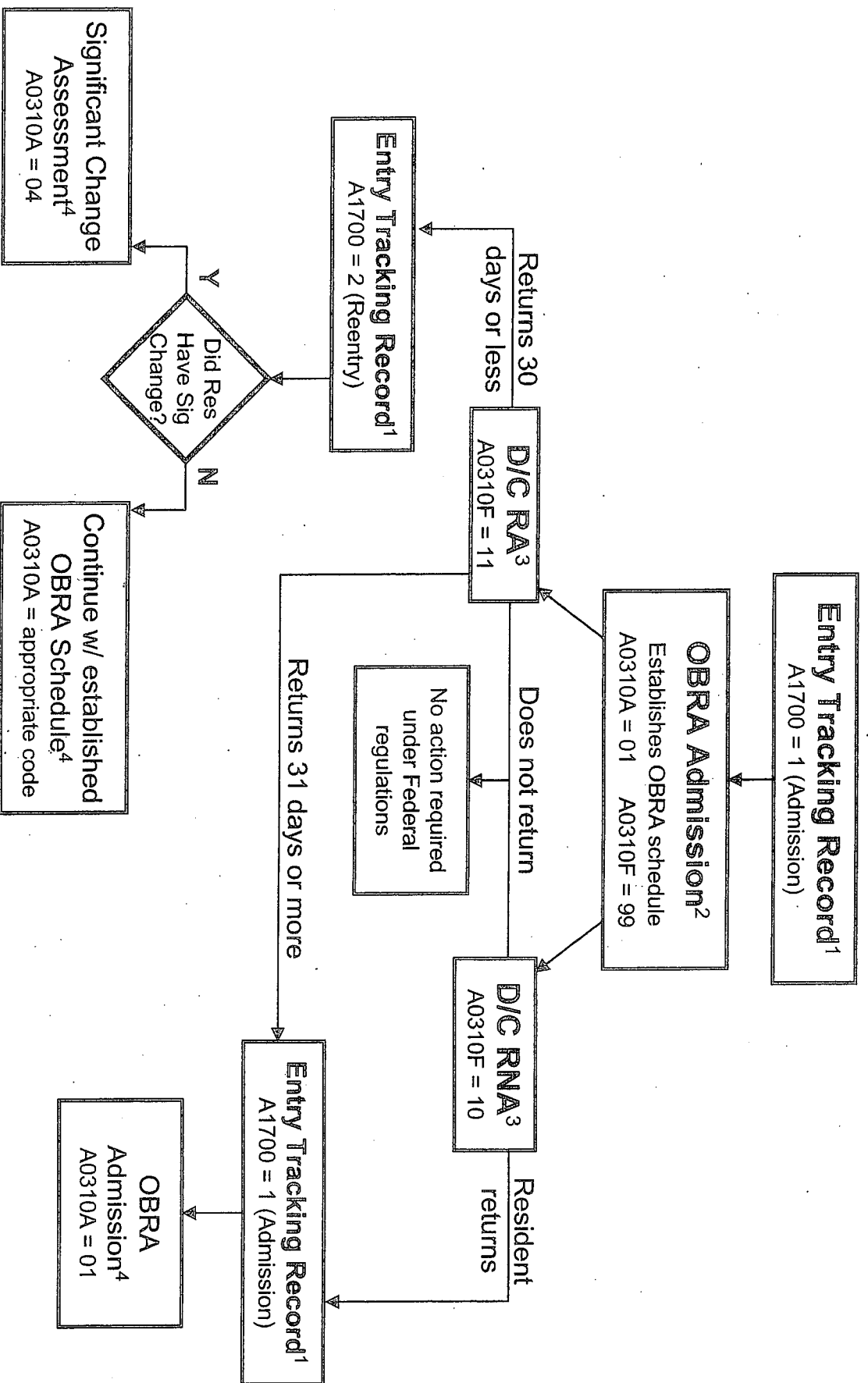
A0310A = 99    A0310B = 99    A0310C = 0    A0310D = 0 or blank    A0310E = 0    A0310F = 01

A0310B – E = appropriate code    A0310B – F = appropriate code

When A1700 = 1, the first OBRA assessment should be an admission assessment unless D/C prior to completion.

ADM	Admission
D/C	Discharge
RA	Return Anticipated
RNA	Return Not Anticipated

# Entry, Discharge, and Reentry Algorithms



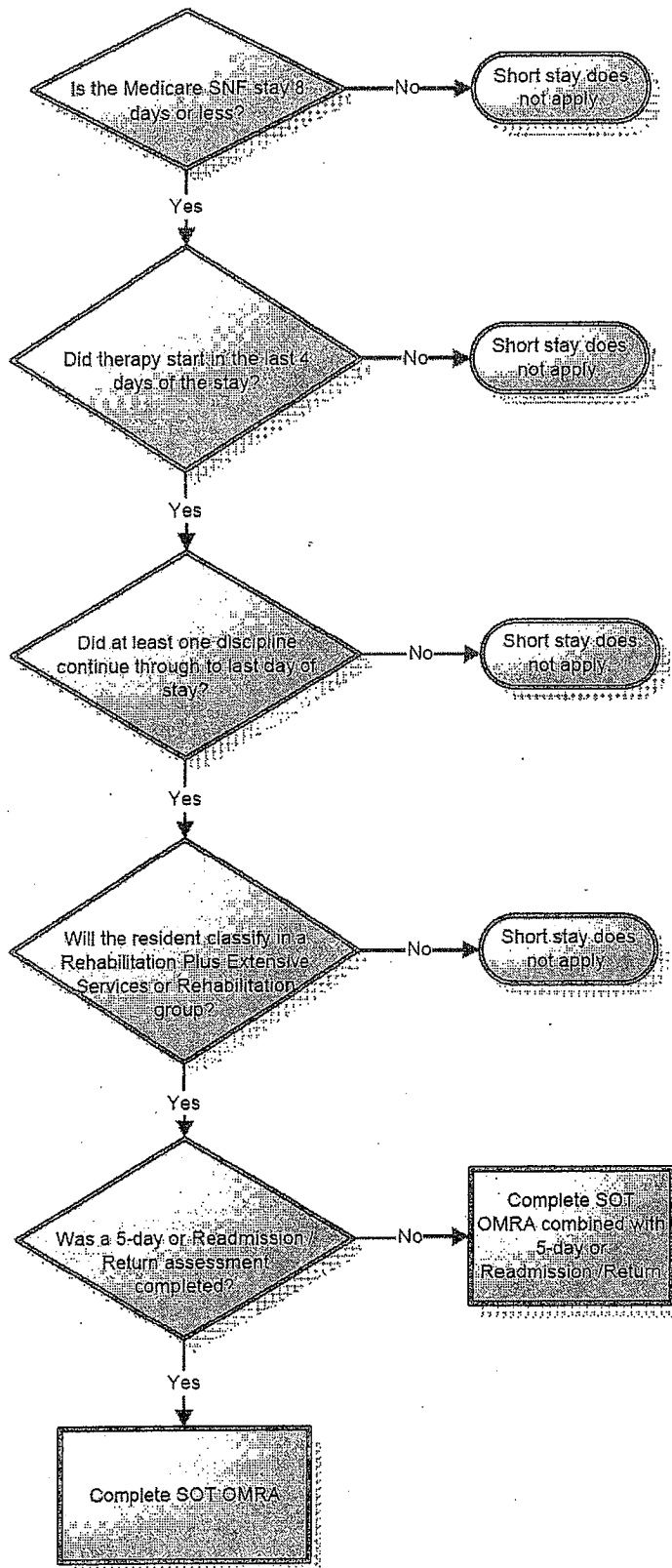
A0310A = 99    A0310B = 99    A0310C = 0    A0310D = 0 or blank    A0310E = 0    A0310F = 01

A0310B – E = appropriate code    <sup>3</sup>A0310A – E = appropriate code    <sup>4</sup>A0310B – F = appropriate code

When A1700 = 1, the first OBRA assessment should be an admission assessment unless D/C prior to completion.

D/C	Discharge
RA	Return Anticipated
RNA	Return Not Anticipated

Medicare Short Stay Assessment Algorithm



**Medicare Short Stay Assessment Requirements:**  
All 8 must be true

- Assessment Requirements:**
1. Must be SOT OMRA
  2. 5-day or readmission/return assessment must be completed (may be combined with the SOT OMRA)

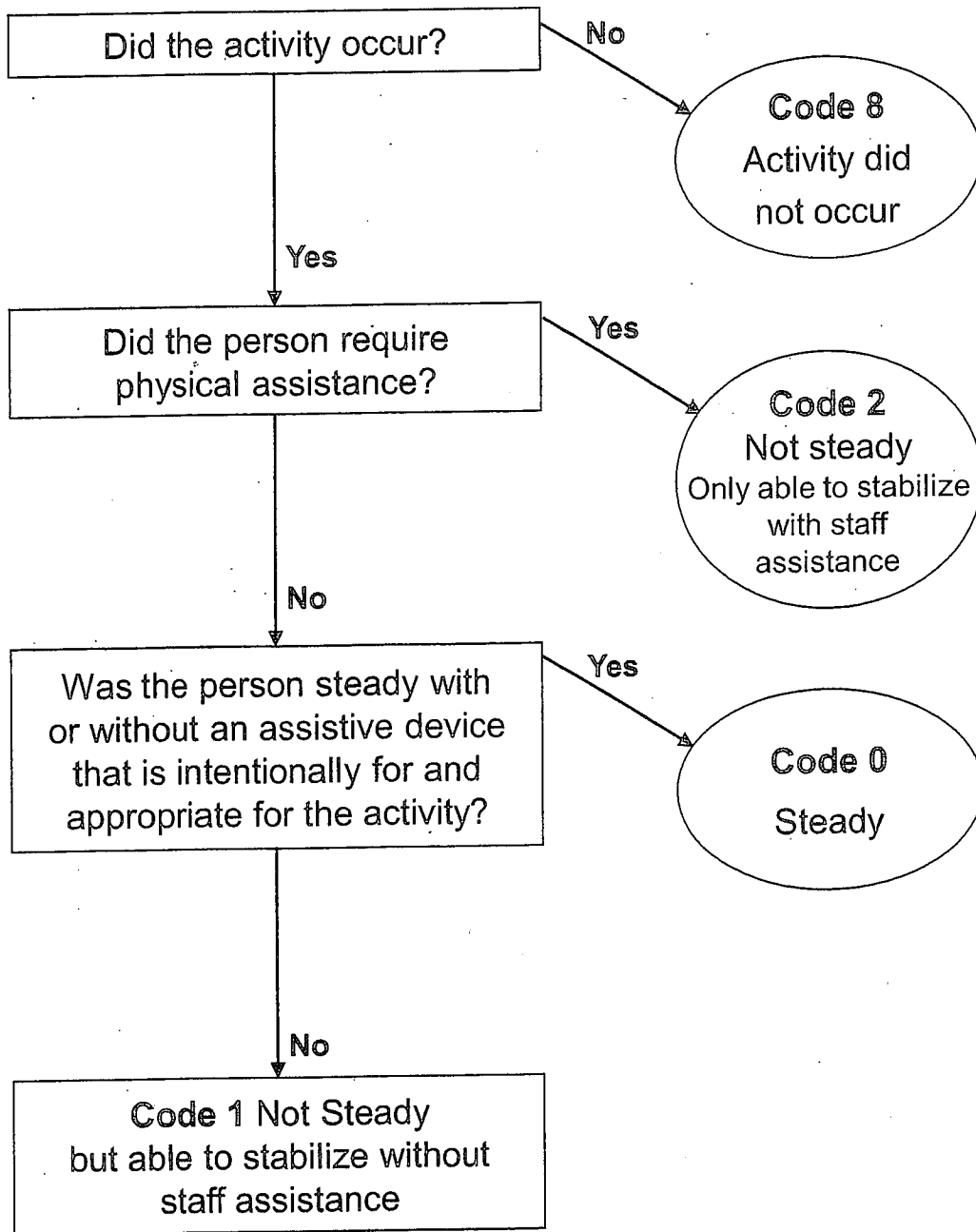
- ARD Requirements:**
3. Must be Day 8 or earlier of Part A stay
  4. Must be last day of Part A stay (see Item 2400 instructions)
  5. Must be no more than 3 days after the start of therapy

- Rehabilitation Requirements:**
6. Must have started in last 4 days of Part A stay
  7. Must continue through last day of Part A stay

- RUG Requirement:**
8. Must classify resident into a Rehabilitation Plus Extensive Services or Rehabilitation group

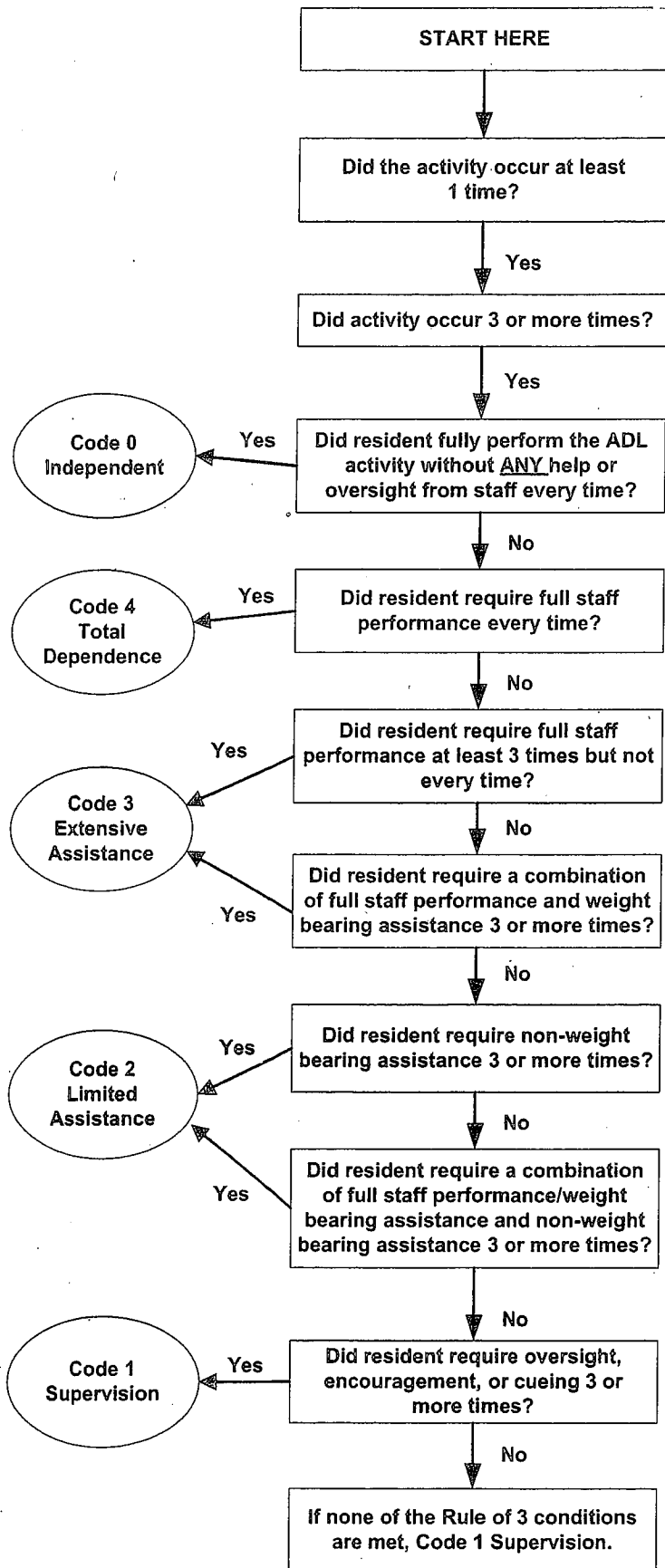
**Note:** When the earliest start of therapy is 1<sup>st</sup> day of stay, then the Part A stay must be 4 days or less

# G0300 Balance During Transitions and Walking Coding Algorithms



**DRAFT TRAINING AID**  
**29 May 2010**

# MDS 3.0 ADL ALGORITHM



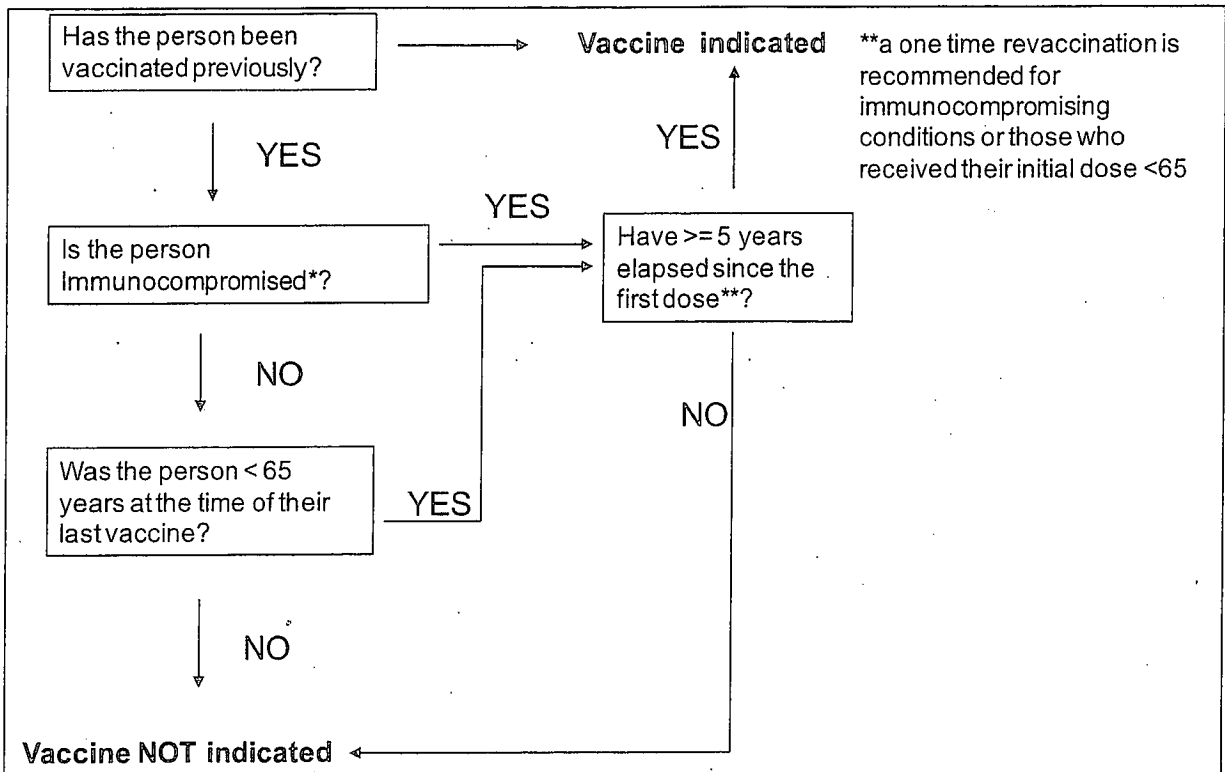
## > INSTRUCTIONS

Follow the arrows on the flowchart to determine correct coding, starting at the "Did Activity Occur?" box.

### Instructions for Rule 3

- When an activity occurs three times at any one given level, code that level.
- When an activity occurs three times at multiple levels, **code the most dependent**. Exceptions are: total dependence (4) – activity must require full assist every time; and activity did not occur (8) – activity must not have occurred at all. Example, three times extensive assistance (3) and three times limited assistance (2) – code extensive assistance (3).
- When an activity occurs at more than one level but not three times at any one level, apply the following:
  - Episodes of full staff performance are considered to be weight-bearing assistance (when every episode is full staff performance - this is total dependence).
  - When there are 3 or more episodes of a combination of full staff performance and weight-bearing assistance - code extensive assistance (3).
  - When there are 3 or more episodes of a combination of full staff performance/weight bearing assistance, and non-weight bearing assistance, code limited assistance (2).

**If none of the above are met, code supervision**



Adopted from the CDC Recommendations and Reports, Prevention of Pneumococcal Disease: Recommendations of the Advisory Committee on Immunization Practices (ACIP) Recommended Adult Immunization Schedule --- United States. (2009, January 9). *MMWR*, 57(53), Q-1-Q-4.