



TN NEWBORN SCREENING NEWSLETTER

September, 2007

Voice Response System (VRS)

- The automated VRS was set up for healthcare facilities and staff to obtain NBS results 24/7 through the use of a personal identification number. If you have not or do not know if you have signed up, please contact Kathy Miller at 615-262-6153 for more information.
- When using the VRS, remember to have mother's SSN and physician's license number available. Please anticipate your scheduled visits and get your results ahead of time through the VRS; if mother's SSN is unknown, please fax your NBS requests to fax# 615-262-6458. The VRS access numbers are: 262-3041 (local) and 866-355-6132 (toll free).

Getting NBS Right The First Time

- Time is of essence.
- NBS should be collected between 24-48 hours after birth.
 - >Exception: By 7 days of age for Premature, on parenteral feeding, and sick babies
 - >Exception: Transfers/Transfusions ASAP.
- Send filter paper to state lab as soon as it dries (minimum 3 hrs.). All filter papers should be mailed out the same day and no later than the next day after collection.
- If received >10 days of collection = unsat
- Poly (plastic) bags = unsat
- Missing information = unsat
- Using outside mail receptacles = possible inaccurate results due to heat

NBS Updates

NBS Educational CD to be released soon. Stay updated by visiting our website at: <http://health.state.tn.us/womenshealth/NBS/index.htm>

Farewells and Welcomes

- Farewell to Pixie Smith-Duncan, RN from WHG-NBS.
- Welcome Renee Sinnott to WHG-Hearing Department
- Welcome Kristi Lunsford to St. Jude Hematology.

Newborn Hearing

Jacque Cundall, Director 615-262-6160
 Kathy Miller 615-262-6153
 Renee Sinnott 615-262-6154

Newborn Screening

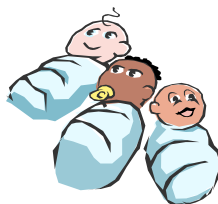
Phone # 615-262-6304 Fax #615-262-6458
 Mitzi Lamberth, Director
 Jan Keen
 Nancy Stoxstill

Tentative State Holidays 2007 Remaining

Monday, November 12th
 Thursday, November 22nd
 Tuesday, December 25th

September is *Sickle Cell Awareness* Month. Please see our *****Special Edition*****.

Mail Specimens to:
***Newborn Screening
 Tennessee Department of Health
 Laboratory Services
 P.O. Box 305130
 Nashville, TN 37230-5130***



Send Specimens by Courier to:
***Newborn Screening
 Tennessee Department of Health
 Laboratory Services
 630 Hart Lane
 Nashville, TN 37216***

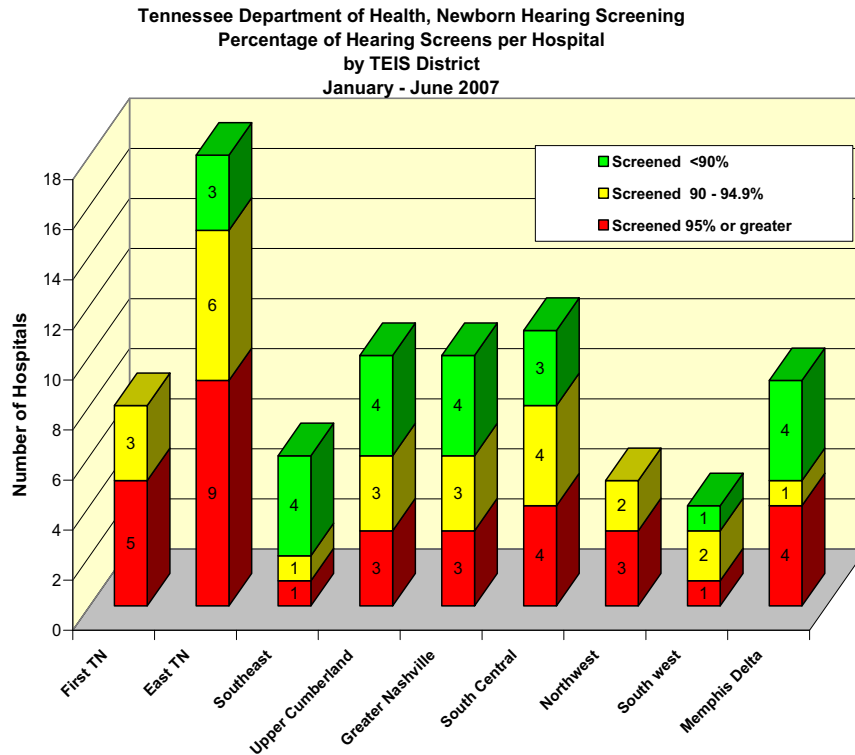


Newborn Hearing Screening



In June 2007, there were 79 birthing hospitals and facilities:

- 100% of facilities conduct hearing screening
- 33 hospitals screened at least 95% of the infants
- 25 screened at least 90% of the infants
- 23 screened less than 90% of the infants
- This is excellent considering there is no legislative mandate.



- 90% of all infants were screened for hearing loss in 2006
- Parents of infants born at home are notified of the need for hearing screening (June 2007)
- Newborn Hearing Screening Reports were distributed to hospitals in June 2007. Reports are in a new format. The report will be distributed quarterly.
- Hospitals may now request hospital hearing data by a specific time period (month, quarter, annual) that lists infant name. The report includes hearing screen results by ear and method used. A list of infants with NO hearing screening is also available.

TN Newborn Hearing	Births	Screened	Referred	Hearing Loss
2005	87,815	58,296 (67%)	2,338	55
2006 (preliminary)	89,115	80,149 (90%)	3,499	69

- Look for additional Newborn Hearing information in future newsletters. For information call Jacque Cundall RN, BSN, Newborn Hearing Coordinator. 615-262-6160